

The Stars ... The Styles ... The Shows

NEW!
\$1.99

inside tv

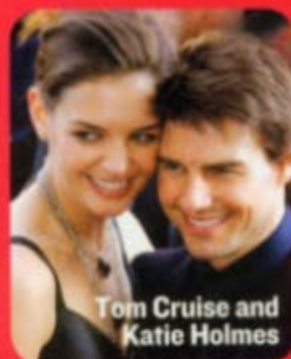
MAY 9, 2005



Paula Abdul

American Idol

What's really going on behind the scenes



Tom Cruise and Katie Holmes

NEW ROMANCE

Why Tom's perfect for Katie

Extreme Makeover: Home Edition
Touching sneak peek

From the Publishers of **TV GUIDE**



0 86441 18200 0



Daytime Emmy Exclusive

Why we love Kelly!

Her fans, her sexy husband and even the boss of a rival network are all smitten



Happy Mother's Day!
Our 10 favorite TV Moms

1



"The gilding on this Varese ebony mirror from Bombay Company added a country-French flavor, and bounced well off all the black in the room."

"From Waverly—toile fabric is hot, and we love to follow the trends. I also wanted to offset the tables with dramatic windows."



"I got these plates at John Derian's store in Manhattan. I hung them exactly the way he had them displayed—not perfectly spaced, and there's some overlapping. It looks unintentional."



"The zinc pigeons are from Bloomingdale's, and I made a special trip to Manhattan's flower district to buy 'nest-making' materials."



"DeBrand Fine Chocolates in New York made us this, with marble that matched my counters and a 'T' in the signature typeface."



The Donald with sidekick Carolyn Kepcher.



"From Restoration Hardware's Sutter collection, and filled with Villeroy & Boch china—and there again, I incorporated some toile patterns."

"Bare, concrete floors echoed, so we switched to Roppe rubber flooring in a farm-kitchen checkerboard pattern."

Get the look next page

Trump This!

On 'The Apprentice,' an ultra-mod kitchen totally loses its cool, thanks to creative, country accents



"The tables and chairs from Restoration Hardware were proportioned just right. I covered a few chairs in toile to mix things up, and the end chair's a flea-market find."

"From Williams-Sonoma—but the candidates never learned how to use it!"

"I wanted seating where people could really relax, and these fabric chairs from Mitchell Gold helped soften the setting."

TUNE IN!
The
Apprentice
on NBC, Thursday
at 9 pm

We're miracle workers," jokes production designer Kelly Van Patter, the heart and soul of *The Apprentice's* to-die-for living quarters since the show first aired. Yet 43-year-old Kelly—who proved her designing mettle during a five-season stint on *Survivor*—also concedes she'd be hard-pressed to create the show's luxe look without the help of the numerous advertisers who clamor for product placement in the posh, iconic suite. "Without the items they donate," she says, "I'd never meet my \$50,000-a-season budget."

The kitchen, the show's most heavily used area, always poses Kelly's biggest challenge. "It's so open, it's the perfect place for candidates to stab each other in the back," she laughs. But since the stars really do cook their own meals here, the space needs to be functional. And although at 1,200 square feet, it may be slightly larger than the average Manhattan apartment, the room has to seat eighteen *and* accommodate a number of jockeying cameramen.

For the show's third season, Kelly warmed up the look of the sleek stainless-steel and marble cabinetry—the only type that was being donated—via gold-toned walls and accent pieces, and accessories inspired by an adjoining room's pheasant wallpaper. Add a traditional wooden farm table and that lively checkerboard floor and you get a virtual chateau in the sky, a space that Kelly aptly describes as "country French meets Wall Street." "We mixed unrelated elements in unexpected ways," the designer explains. "But if you love the things you're using, there's always a way to make it work."

Especially if you can find yourself a corporate sponsor or two. ●

Get the Trump look



Well-chosen accessories take stainless from stark to stunning, says **Carter Oosterhouse** of TLC's "Trading Spaces,"

INSIDE TV's expert-in-residence. Best of all: megabuck budget not required



Harlequin mat, Ballard Designs, \$69



Rooster Script serveware, Williams-Sonoma, \$99



Ceramic toile pears, Ballard Designs, \$49



Monogrammed glasses, Ballard Designs, \$4



Cuisinart toaster, Williams-Sonoma, \$79.95



Vestibule cabinet, Crate & Barrel, \$499



Chris Madden rosemary topiary, JC Penney, \$49



Madison extension table, Crate & Barrel, \$499

TUNE IN!
Trading Spaces
on TLC, weekdays
at 4 pm, Saturday
at 9 and 10 pm,
and Sunday at noon

Style matters

Warming the look of an all-steel kitchen is a bit of a balancing act, notes Carter. But learn a few tricks of the trade, and you'll master it with ease:

Color it in
Counterbalance the coolness of steel by choosing warm paint and furniture colors, says the designer, citing the butter-yellow of the "Apprentice" walls and side chairs as good examples. "A trick I use when I can't decide which color scheme to go with is to sit bowls of different-colored fruits on the table—one at a time—until I hit on one that suits me."

"Feel" it While yellow-tinged walls and fabrics like toile will add visual warmth to a space, it's important to remember the element of touch. "Walking on a rubber floor like the one on the set sends a different sensory message than walking on tile or hardwood." And if you're not ready to replace your floor, a soft area rug can certainly up the "warm and fuzzy" quotient.

Mix it up
Details with both urban and country elements will unify your look. A few "Apprentice" kitchen examples: the backsplash in butter-colored (country) subway tile (urban); bird sculptures (country) in pewter and zinc (urban); and the shabby-chic (country) chandeliers made of metal (urban).