

# watch!

## LOVE BITES

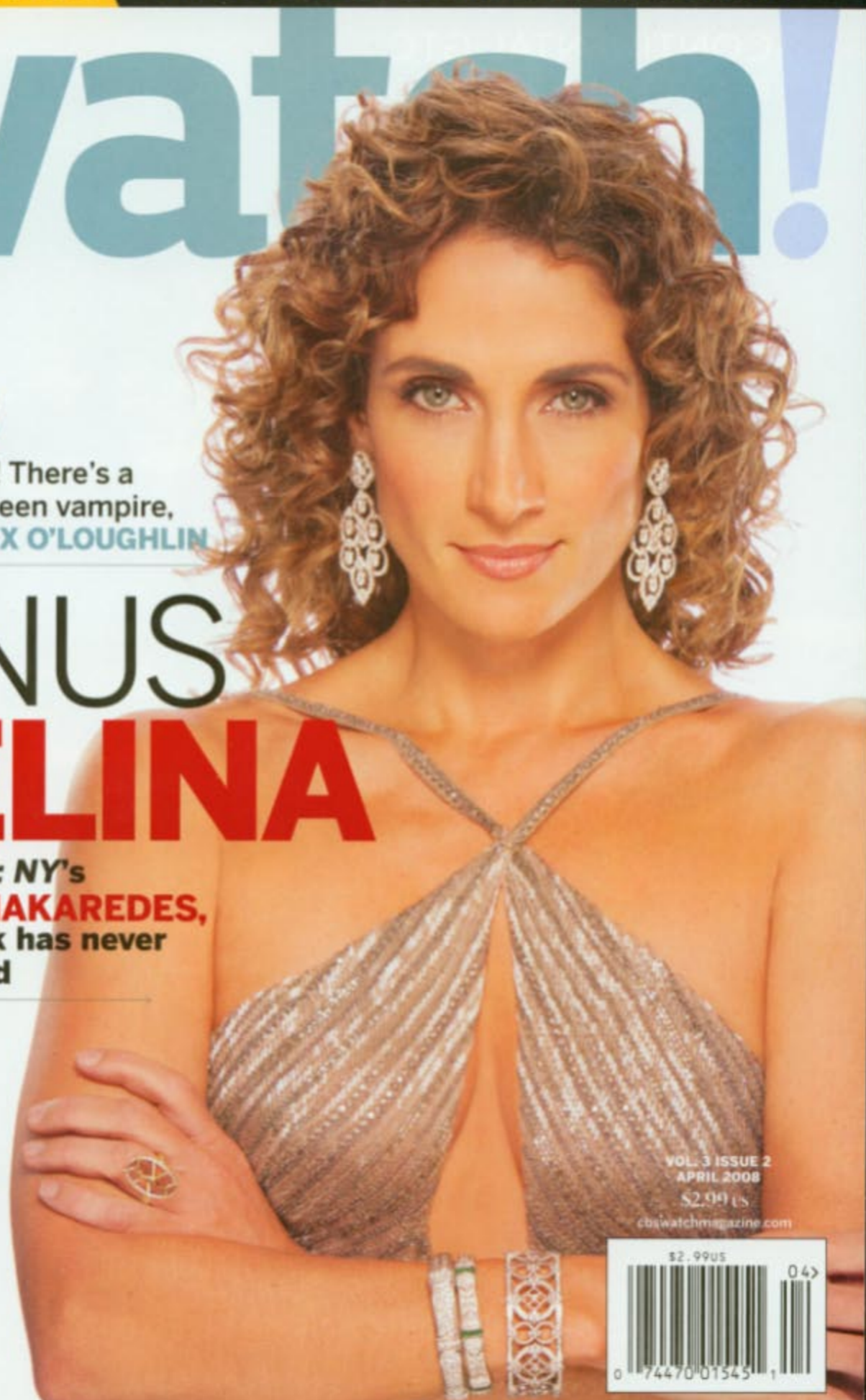
Look out, ladies! There's a HOT, new on-screen vampire, *Moonlight's* **ALEX O'LOUGHLIN**

# VENUS MELINA

Thanks to *CSI: NY's* **MELINA KANAKAREDES**, detective work has never looked so good

## Star Style!

From LASHES to LIPSTICK, makeup pros share their secrets



VOL. 3 ISSUE 2

APRIL 2008

\$2.99 US

[cbswatchmagazine.com](http://cbswatchmagazine.com)

\$2.99US



04>

# lineup

## features

### A Goddess Among Us

With her on-screen grace and classic beauty, *CSI: NY*'s Melina Kanakaredes brings new dimensions to the procedural drama.

32

### Interview with the New Vampire

Put away your garlic and wooden stakes. Thanks to a new twist on the vampire legend, *Moonlight*'s Alex O'Loughlin is emerging from the shadows as a TV heartthrob.

42

### How They Created *Mother*

The men behind *How I Met Your Mother* reveal the show's real-life roots, from its New York setting to the characters of Ted, Marshall, Lily—and yes, even Barney.

48

### To the Victor Go the Spoils

The man, the myth and the mustache ... a revealing portrait of *The Young and the Restless*' Eric Braeden.

52

### Ready for Their Close-Ups

HDTV has revolutionized television, giving viewers a spectacularly clear and precise picture. It's also presented stars with a new problem: an unforgiving lens. Send in the makeup team!

56

### On the Case

Iconic architecture. Gritty streets. Colorful characters. For the producers of *Cold Case*, there's just nothing like filming on location in the City of Brotherly Love.

60



## >> in every issue

- 10 EDITOR'S NOTE
- 15 QUICK TAKES
- 69 IN THE NOW
- 86 SIGN OFF

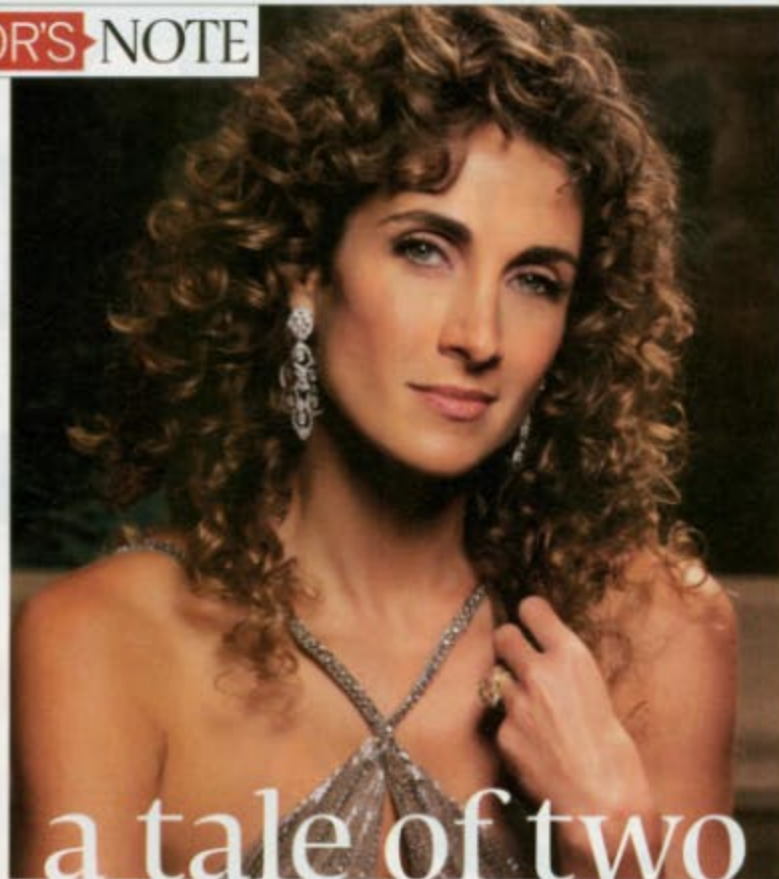


Subscribe to

## Watch!

One year for only \$7.99.

Visit [cbswatchmagazine.com](http://cbswatchmagazine.com) or call 800-532-8190.



## a tale of two magazines

**W**elcome to a special edition of *Watch!* magazine. We're thrilled that this issue marks the debut of our newest publication, *Watch! CBS Sports*, which you can find in the back of this magazine.

And with March Madness upon us, what better time to kick off, or more appropriately, slam dunk a new magazine that gives sports fans the 411 on all their favorite big-ticket matchups, like the Final Four, the Masters, the U.S. Open and, of course, the NFL's weekly battles on the gridiron.

We enlisted contributing editor Jennifer Goddard and CBS Sports' incomparable communications team—LeslieAnne Wade, Robin Brendle, Jerry Caraccolli and Jen Sabatelle—to put together a comprehensive guide to the madness that has become the NCAA Division I Men's Basketball Championship, from tournament brackets to behind-the-scenes action.

Of course, the heart of *Watch!* magazine is entertainment, and boy, we're all over that in this issue. Chief among that is our cover subject, *CSI: NY* star Melina Kanakaredes. To call this woman beautiful does not do justice to the word, but contributing editor Jim Colucci also found her to be funny, personable and very much tied to her Greek heritage. And when you've got a cover subject this striking, you'd be silly not to take advantage of it with a glamorous fashion shoot, which we did at the famed Fairmont Hotel San Francisco. Our team, led by photographer Cliff Lipson and creative director Angelique O'Neil, put together an amazing shoot evoking the timeless elegance of yesteryear starlets such as Ava Gardner and Sophia Loren. The result is some of the most amazing photos of Melina Kanakaredes in print—in our humble opinion.

There's lots, lots more, so dive in!

Happy Reading,

Jeremy Murphy  
Editor in Chief

*Watch!* publisher  
Michael Rizzi, cover girl  
Melina Kanakaredes,  
editor in chief Jeremy  
Murphy and creative  
director Angelique O'Neil.



Kanakaredes: Cliff Lipson/CBS

# watch!

[cbswatchmagazine.com](http://cbswatchmagazine.com)

**Editor in Chief**  
Jeremy Murphy  
[jeremy.murphy@cbs.com](mailto:jeremy.murphy@cbs.com)

**Publisher**  
Michael Rizzi  
[michael.rizzi@cbs.com](mailto:michael.rizzi@cbs.com)

**Creative Director**  
Angelique O'Neil  
**Watch! CBS Sports  
Project Manager**  
Jennifer Goddard

**Fashion Coordinator**  
Paula Lauriano

**Manager, Editorial  
& Operations**  
Mona Buehler  
**Contributing  
Editors**  
Rebecca Ascher-Walsh  
Jim Colucci  
Jen Sabatelle

**Photo Editor**  
Meagan McLaughlin

**Photo Producer**  
Christopher Ross  
**Contributors**  
Virginia Bell  
Alan Carter  
Mike Dojc  
Matt Hurwitz  
Shelley Levitt  
Lynn Morgan

**Newsstand  
Consultant**  
Ron Sklon

**Circulation Director**  
Randy Silverman  
[randy.silverman@cbs.com](mailto:randy.silverman@cbs.com)  
Marianne O'Leary  
Michele Shapiro  
Amy Strube

**CBS**

**Executive Vice President,  
Corporate Communications**  
Gil Schwartz

**Senior Vice President**  
Dana McClintock

**Vice President, Photography**  
Gail Plautz

**McMURRY**

**President/Custom Media**  
Fred Petrovsky • 888-626-8779  
[fred.petrovsky@mcmurry.com](mailto:fred.petrovsky@mcmurry.com)

**VP/Creative  
Services**  
Beth Tomkiw

**Senior Editor**  
Jeff Ficker

**Editors**  
Kelly Kramer  
Jill Schildhouse

**Art Directors**  
Sharon Anne Jones  
Heidi Easudes  
Maggie Conners  
Steve Elowson

**Custom Media  
Inquiries**  
Erin Zilis  
888-626-8779  
[erin.zilis@mcmurry.com](mailto:erin.zilis@mcmurry.com)

**Prep Specialist**  
Sonia Washington

**Imaging  
Specialist**  
Dane Nordine

**VP/Production**  
Dan Brenner

**Production Manager**  
Tanya Clark

**Senior Director of  
Database Marketing**  
Joseph Abeyta

**Advertising**  
[watchmediakit.com](http://watchmediakit.com)

Basic subscription rate: Six issues is \$11.99. 12 issues is \$19.99. Canada and foreign surface add \$12 extra per year, payable in U.S. funds. CBS *Watch!* is published six times a year. To subscribe, send check or money order to *Watch!* magazine, PO Box 905, NY, NY 10102-2147, or call 800-532-8190. You can also subscribe online at [cbswatchmagazine.com](http://cbswatchmagazine.com).

Copyright ©2008 by CCG Ventures Inc. All rights reserved. *Watch!* is published by McMurry. E-mail your letters to the editor to [watch@cbs.com](mailto:watch@cbs.com). Please send all editorial comments, questions or manuscripts to [watch@magazine.cbs.com](mailto:watch@magazine.cbs.com). CBS Television, 51 W. 52nd Street, Office 400/4th Floor, New York, NY 10019. Unsolicited material must be accompanied by a self-addressed envelope. This publication may not be reproduced or distributed in any form or by any means without the prior written permission of the NRPC. Requests for reprint permission should be sent to McMurry Campus Center, 1010 E. Missouri Ave., Phoenix, AZ 85034.



# contributors



## Cliff Lipson

As senior staff photographer at CBS Television, Cliff Lipson has captured a host of world-famous faces, from Jon Stewart to Sidney Poitier. For *Watch!* he turns his lens to *CSI: NY*'s Melina Kanakaredes ("A Goddess Among Us").



## Michele Shapiro

A contributor to magazines from *Time Out New York* to *Seventeen* and *Self*, Michele Shapiro explores the brave new beauty world of HDTV makeup in this issue of *Watch!* ("Ready for Their Close-Ups").



## Shelley Levitt

Los Angeles-based lifestyle writer Shelley Levitt regularly contributes to *Self*, *Los Angeles* magazine and *Women's Health*, among others. In this issue, she tackles every star's worst nightmare ("Red Carpet Beauty Traumas—Solved").



## Jim Colucci

Contributing editor Jim Colucci is the author of the TV companion book *Will & Grace: Fabulously Uncensored*. For *Watch!* he goes one-on-one with the co-creators of *How I Met Your Mother* ("How They Created *Mother*").



## Rebecca Ascher-Walsh

A former senior writer at *Entertainment Weekly*, Rebecca Ascher-Walsh has contributed to *The Wall Street Journal* and *The Hollywood Reporter*. In this issue of *Watch!*, she chats with novelist Christopher Rice ("All in the Family").

Fishnet gown  
with silver  
beading by  
Roberto Cavalli  
(robertocavalli  
.com). Chandelier  
earrings with  
hanging diamond  
clovers, pavé  
Estate Pia cuff,  
Estate Pia cuff  
with emerald  
baguettes and  
diamonds, small  
Garland cuff and  
Caged citrine  
ring; all by  
Judith Ripka,  
18k Couture  
Collection  
(judithripka.com).



With her on-screen grace  
and classic beauty, *CSI: NY*'s  
Melina Kanakaredes brings new  
dimensions to the procedural drama

# A Goddess

Among  
Us

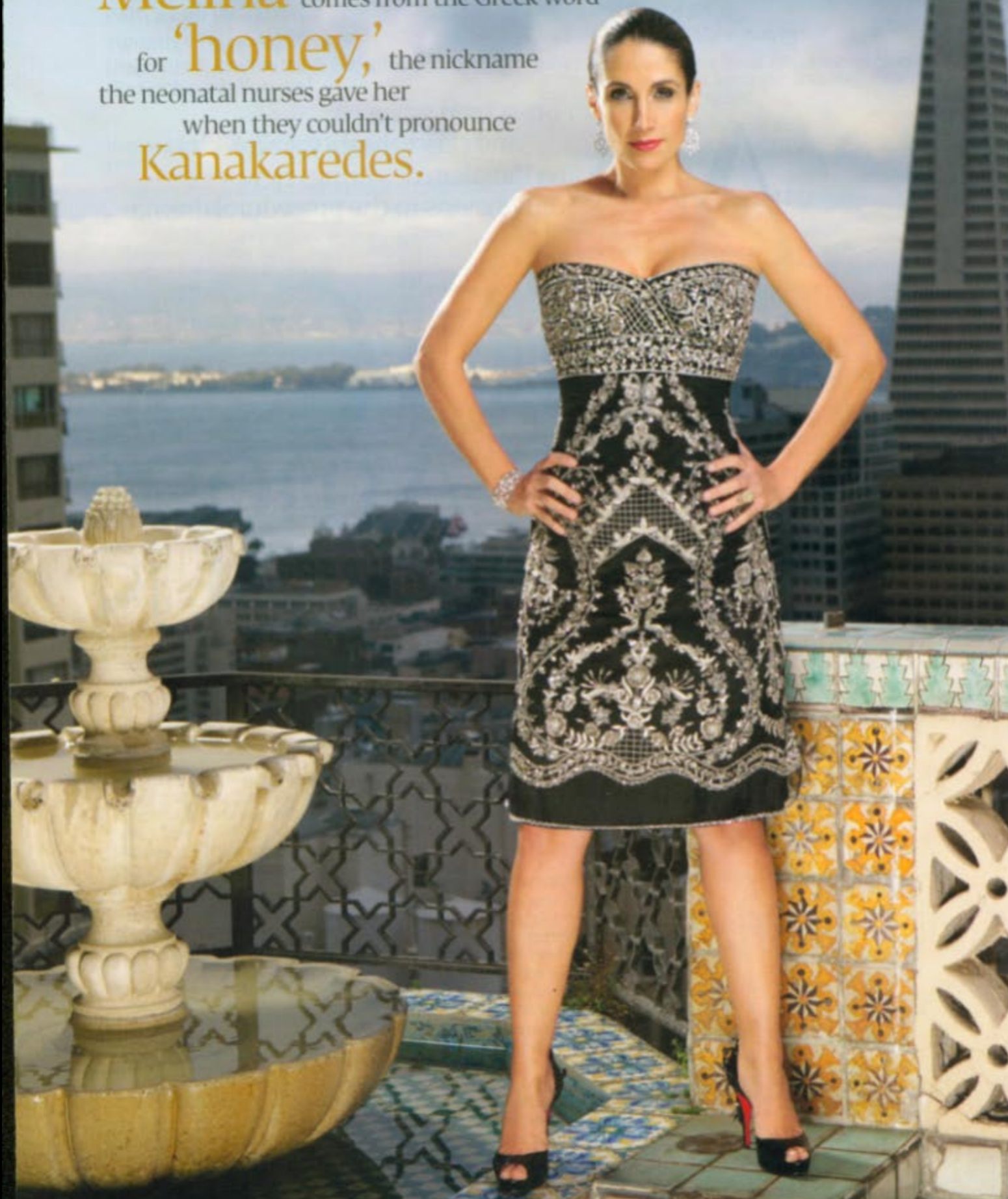
By Jim Colucci  
Photography by Cliff Lipson  
Styling by Angelique O'Neil

**An exotic beauty** famous for her ringlets, Melina Kanakaredes, by now a photo shoot veteran, seems relaxed in front of *Watch!* magazine's cameras as she poses, reclining across the dining room table in the penthouse suite of The Fairmont San Francisco. As the flashes pop, she engages the crowd of staffers around her in a discussion of the word "OK" and its Greek origins. Although there are many theories as to how this term actually came about, Kanakaredes says—and for what it's worth, Wikipedia later supports—that "OK" is an abbreviation for the phrase "Ola Kala," which Greek sailors had been noted using in American ports. The letters O and K were also written, history suggests, on Greek ships, to show that they were ready for departure.

Although everyone in the room is bearing cellphones with Internet browsers, no one bothers to double check by Googling the phrase. After all, this gal with the oversized Hellenic surname—one of the proudest and most famously Greek-American celebrities since Telly Savalas—must know whereof she speaks.

"I am an American who loves her heritage," Kanakaredes explains later. "We can be proud of the place we live in and have

Melina comes from the Greek word  
for 'honey,' the nickname  
the neonatal nurses gave her  
when they couldn't pronounce  
Kanakaredes.



Vintage sequined cocktail dress by Escada (escada.com). Patent Castellana d'Orsay pump by Christian Louboutin (christianlouboutin.com). Grand chandelier earrings, small Garland cuff and pave Estate ring, all by Judith Ripka, JBR Couture Collection (judithripka.com).

our culture. That's what makes this country so much richer." Of course, the actress realizes that she had no choice but to learn to appreciate her ethnic background. Growing up in Akron, Ohio, which she remembers as "not a big city like Cleveland... but a big small town and perfect place to grow up," Kanakaredes was surrounded by an extended family of fellow parishioners from the town's sole Greek Orthodox church.

"The doctor who delivered me was Greek," Kanakaredes says, laughing, "and when I would perform at a very young age in church, and then later when I started to work more in this business, he would tell me, 'I shaped your head. That's why you're so beautiful and successful.' In that small community, everybody got credit for something."

### Greek Theater

The youngest of three children, Kanakaredes—whose first name, Melina, comes from the Greek word for "honey," the nickname the neonatal nurses gave her when they couldn't pronounce Kanakaredes [Kah-nah-KAH-ree-deez]—grew up singing with her older sisters, and she landed her first acting role at age 8 in a community theater production of *Tom Sawyer*. "My picture was in the paper, and I was very excited," the actress remembers. "But my mother said, 'Be excited today, but tomorrow a lot of puppies are learning to be potty trained.' It was great advice that this isn't real, so keep your feet on the ground."

She continued to perform throughout high school, also encouraged by her insurance salesman father, who Kanakaredes says was "very supportive, but also very strict." She pursued her passion for the stage as long as she kept up her grades. "I was a very diligent student so that I could do what I loved," she

says. "And if they didn't have a show at my high school, and there was one at the all-boys Jesuit school they needed a girl for, I'd do that, too. I caught the acting bug early."

Kanakaredes credits her success to the somewhat atypical encouragement she got at home. "Usually in immigrant families, you go to college, and then get a solid, normal job. There's not a lot of dreaming involved." But her large family filled with women—she can only think of two boys aside from her father, both distant cousins—spurred her on. "I always felt I had a bunch of hands that could catch me when I fell," she says. Likening her relations to other famously family-oriented ethnicities like Italians and Jews, Kanakaredes characterizes hers as "always a huge, overbearing, over-loving, fabulous support system that can be difficult for some to accept. But when you're born into it, it's the norm."

### Following That Guiding Light

After graduating from Pittsburgh's Point Park College on a full acting scholarship, Kanakaredes headed east, and she signed with an agent after only three months of living in New York—an agent she has kept to this day. By 21, she landed her first network TV role on CBS' *Guiding Light* as Greek immigrant ingénue Eleni Andros. ("All that impersonating my grandmother in college paid off!" she says, laughing). And following the advice of an old professor, who told her to keep active in theater, she performed off-Broadway at night after a full day of taping the daytime drama series.



It proved to be an extremely valuable experience. "In soap operas, there's the myth that there's a teleprompter—it wasn't true. I would have to learn and perform 30 pages of lines for the show every day, and then at 7 p.m., jump into a cab and get to the theater for an 8 p.m. curtain," Kanakaredes remembers. Combining television and theater, she says, made for a great graduate study in acting and prepared her for TV stardom to come. "In college, they teach you the stage, and there's no such thing as acting for the camera. I'd never had three cameras in front of me, or had to hit a mark. And so *Guiding Light* particularly became a great place to hone my skills."

Three years into her role on the soap, Kanakaredes was discovered again, this time by a casting agent from ABC who saw her perform in the play *Down by the Ocean* as the sexy lead character who has an affair with three different men. "The next day I was on a plane to meet Steven Bochco," the actress remembers. Soon, she was playing Jimmy Smits' love interest on *NYPD Blue*, her first big network role. True to form, she didn't give up her day job.

"I had decided not to renew my contract at *Guiding Light*, because I wanted to move on, but I guess this is an ethical Greek thing—I can't leave people in the lurch," she says. "So I stayed on the show and flew back and forth doing both roles until *Guiding Light* found my replacement."

It was only a matter of time before prime-time stardom would strike. After playing opposite two of her idols, Mary Tyler Moore and

Madeline Kahn, in CBS' short-lived 1995 newspaper drama *New York News*, Kanakaredes landed her first starring role on the NBC hit *Providence* as Beverly Hills plastic surgeon Sydney Hansen, who returns home to Rhode Island after the death of her mother and winds up staying ("My first WASPI!" the actress jokes). The show lasted five seasons and made Kanakaredes one of prime time's most bankable new talents, appearing on numerous magazine covers and even as the face of the cosmetics giant Maybelline. The fame came quickly, but the actress learned to keep it in perspective and still have fun.

"I learned most importantly that on a drama series you spend more time with your co-workers than you do with your own family," Kanakaredes says. "So it's important to set a tone of enjoyment and keep loving what you do. [On *CSI: NY* too] if you talk to Gary Sinise about me, he'll just laugh. I bring a gazillion family members to the set, and I love to see their excitement. If you're working 17-hour days, you sometimes forget that what you do is really cool."

### Moving Four Hours South to *CSI: NY*

Just months after she left *Providence*, CBS cast Kanakaredes in the co-lead role of its hotly anticipated *CSI* spinoff *CSI: NY*, opposite Gary Sinise. At that point, the show was "nothing but a name," she remembers, and so was her character. "It was the first time I ever went in knowing nothing about who I'd be playing," she

**This page:** Gown with paillettes by Roberto Cavalli (robertocavalli.com).  
**Opposite:** Paillette gown by Naeem Khan, available at Bergdorf Goodman and Neiman Marcus (naeemkhan.com). Iridescent sandal by Giuseppe Zanotti Design (giuseppe-zanotti-design.com). Monaco ring in frosted blue topaz and diamonds, and pavé Arielle earrings; both by Judith Ripka, 18K Couture Collection (judithripka.com).

says of her initial meeting with series creator Anthony E. Zuiker, whom she characterizes as "a fabulous bundle of fire."

Zuiker told her the one thing he knew about Stella at that point: "She's the Statue of Liberty on this team. And I thought, 'What does that mean?' But what I came to understand is that she is a pillar of strength, compassionate, and the yin to Gary's character's yang," says Kanakaredes. "Mac sees everything as black and white, but Stella is the one who believes in shades of gray. And that enables her to have compassion and to run from her heart."

Because Stella was initially just a sketch in light gray pencil, the actress relished the opportunity to give input into her nascent character. "I'll sit there with a writer and ask, 'What do you think? I think this could happen.' [Executive Producer]

"I learned most importantly that on a drama series you spend more time with your co-workers than you do with your own family. So it's important to set a tone of enjoyment and keep loving what you do."



**“The doctor who delivered me was Greek, and when I would perform at a very young age in church, and then later when I started to work more in this business, he would tell me, ‘I shaped your head. That’s why you’re so beautiful and successful.’ In that small community, everybody got credit for something.”**

Pam Veasey and our wonderful writers have an open-door policy, and so some things become a collaborative effort. It’s something you can do only on TV.” Season by season, the portrait of Stella has come into sharper focus, and Kanakaredes says she has come to love the character for her wisdom, her strength, her integrity—and her weaknesses.

True. Stella’s had some bad luck with men, such as last season when she took up with a shady boyfriend whom she eventually had to shoot in the line of duty. “I love that imperfection in her, and how that gives me somewhere to go. As an actor, you’re always fighting for those moments,” Kanakaredes says.

She also cites an episode last season in which Stella, an orphan, temporarily let her foster sister go after she had killed her sexual abuser. “I don’t know if in Season 1 we would have seen her do that, but these characters grow as we learn more about them. Now in Season 4, we’re able to pepper in more of their feelings and emotions.”

#### **Good Evening, Ms. Bonasera**

The audience—not to mention network executives and critics—has taken notice. “Aside from being one of TV’s most beautiful women, Melina brings a sense of smarts, strength and confidence to the role of Stella, which is important to the show,” says Nina Tassler, CBS Entertainment

President. “She’s someone who can go toe-to-toe with just about anyone, without losing any warmth or appeal. It’s a delicate balance, but Melina has been pulling it off for three years now.”

“[She] is a consummately appealing television actress,” agrees *TV Guide* senior writer Ileana Rudolph. “She’ll always work because, while gorgeous and sexy, she’s also smart, appropriately skeptical, and has a natural confidence that makes her completely believable.”

Rudolph notes that not too long after *CSI: NY*’s debut, producers wisely began to capitalize on some of their star’s natural assets. “After hiding her in dowdy pantsuits, the producers were smart enough to emphasize her low-key sensuality by lowering her neckline and lifting her hemlines,” Rudolph says.

And then there’s *People* magazine, which put Kanakaredes on its 50 Most Beautiful People list in 1999. “When I got the phone call about that, I had my hair up on top of my head in a style my daughters call ‘the pineapple,’” she remembers. “My husband [land developer and chef Peter Constantines] said, ‘What if they were to come over here today?’”

“People are far more beautiful when you get to meet them,” she says. And conversely, “I don’t know how many times I’ve met incredibly over-the-top beautiful men and


women and then don’t like the people they are inside. That’s why I work really hard to instill that within my girls. The rest of it you just have to hold up to genetics, and thank your parents and whoever put those pieces together.”

#### **Coming Up Next**

In the summer of 2004, between gigs in *Providence* and TV’s New York, and just four months after having her second daughter, the actress went back to Broadway, taking on the lead role of Sally Bowles in the musical revival of *Cabaret*. “To have John Kander at the piano saying, ‘Melina, let’s run over that again’—well, I was just pinching myself!” she marvels. When *CSI: NY* ends, Kanakaredes hopes to return to the stage as well as try other genres. “The next thing I need to do is a comedy,” says Kanakaredes, who had a blast spoofing her wholesome image on the ribald FOX sketch show *Mad TV*.

In the meanwhile, her main focus will be on raising her two daughters, ages 7 and 5. “There’s no method to my madness,” she says of juggling motherhood with the demanding work schedule of an hour-long drama. “But I do think that this is a great time for women—we’re even stronger than our mothers’ generation because multitasking has taken us to where we have successful jobs outside the house and we’re able to do more than we thought we could.”

Vintage feathered and beaded gown by Escada (escada.com).  
Crystal-embellished sandal by Giuseppe Zanotti Design (giuseppe-zanotti-design.com).  
mother-of-pearl necklace and bracelet by Konstantino Treasures. (konstantinotreasures.com). Pavé Arielle necklace worn in hair by Judith Ripka. 18k Couture Collection (judithripka.com).



Grand chandelier earrings and pavé Estate ring; both by Judith Ripka. 18k Couture Collection (judithripka.com).

## Women's Day

Last year, on International Women's Day, Kanakaredes was selected to speak at a summit at the United Nations. "The focus was on educating women, so that we can change the world. Everything stems from family, and women inevitably keep families together," she says, relating to the topic because of her own Greek background. Like most actresses, Kanakaredes relishes the opportunity to play strong women—characters for whom she draws on her inspiring memories of her own grandmother.

Having moved to the U.S. after refusing an arranged marriage, her grandmother returned to Greece with Kanakaredes' then 3-year-old mother for what was intended to be a quick family visit. But when the Axis powers invaded the northern part of the country, the family was forced to remain in Greece for more than eight years. During that time, Kanakaredes' grandfather was imprisoned for violating curfew, and yet her grandmother still used her basement to shelter a family of Greek Jews who ultimately survived the war.

"It all came to fruition for me when I spoke at the U.N. and told her story," Kanakaredes says proudly. "It's interesting to me that somehow, in my family from the little town of Naoussa in northern Greece, my daughters ended up here in Hollywood. I'm sure it was the farthest thing from my grandmother's mind, because she just wanted her family safe, alive and educated. But for me, the road was paved, and I have the chance to dream. And I live it and love it every day." ■

**PHOTO ASSISTANTS:**  
Tom Hood, Andrew Fornasser and Taylor Glenn

**STYLING ASSISTANTS:**  
Paula Lauriano and Julian Arango

**HAIR:**  
Monte Haight, Criterion Group  
(criterion-group.com)

**MAKEUP:**  
James MacKinnon, Criterion Group  
(criterion-group.com)

**LOCATION:**  
The Fairmont San Francisco

**TRANSPORTATION:**  
Virgin Limo  
(virginlimo.com, 800-421-5466)